



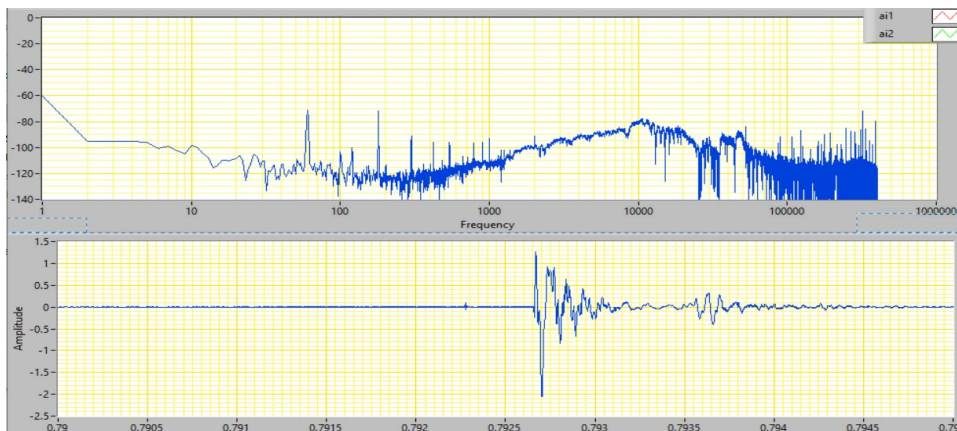
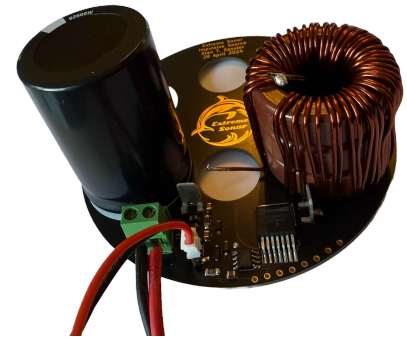
# Impulsive Source Amplifier

## FEATURES

- **High Efficiency:** 95%
- **Highest Resolution:** Better than FM chirp in reverberation
- **Low Volume:** Fits in UUV nosecone

## PERFORMANCE

- **Impulsive Drive:** 3kV 50 $\mu$ Pa @ 1m
- **High Source Level:** 217dB re 1 $\mu$ Pa @ 1m
- **High Power:** Up to 0.2 Joule per impulse
- **Low Energy Usage:** 1W @ 5 pulses/sec
- **Broadband:** 5kHz - 20kHz 10dB BW
- **Center Frequency:** 5kHz - 500kHz



## APPLICATIONS

- **Small Object Detection:** Optimal short/medium range
- **Communications:** Using PPM
- **Swarm Coordination:** In conjunction with Blade Sensor
- **Situational Awareness:** In conjunction with Blade Sensor
- **Targeting & Fusing:** With omni or shaped charge
- **Antifouling:** Prevents biofilm formation
- **Underwater Beacon:** Energy efficient & easily detectable